



Government of Nepal  
Ministry of Education  
**Department of Education**

# 1 STOREY - 2 ROOM - STEEL STRUCTURE WITH STEEL ROOF FRAME

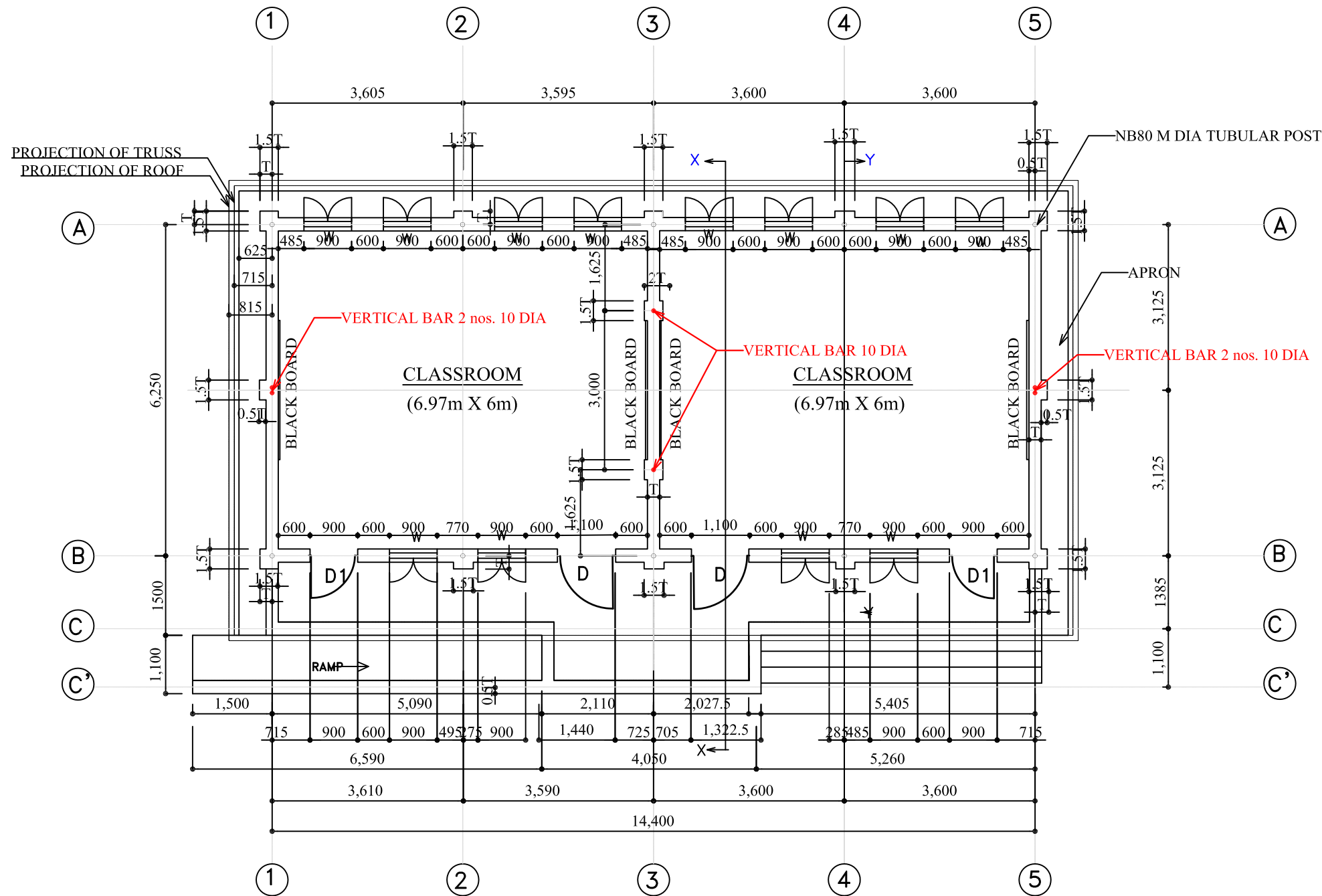
Type Design 23.1

APPROVED: 72/XX/XX

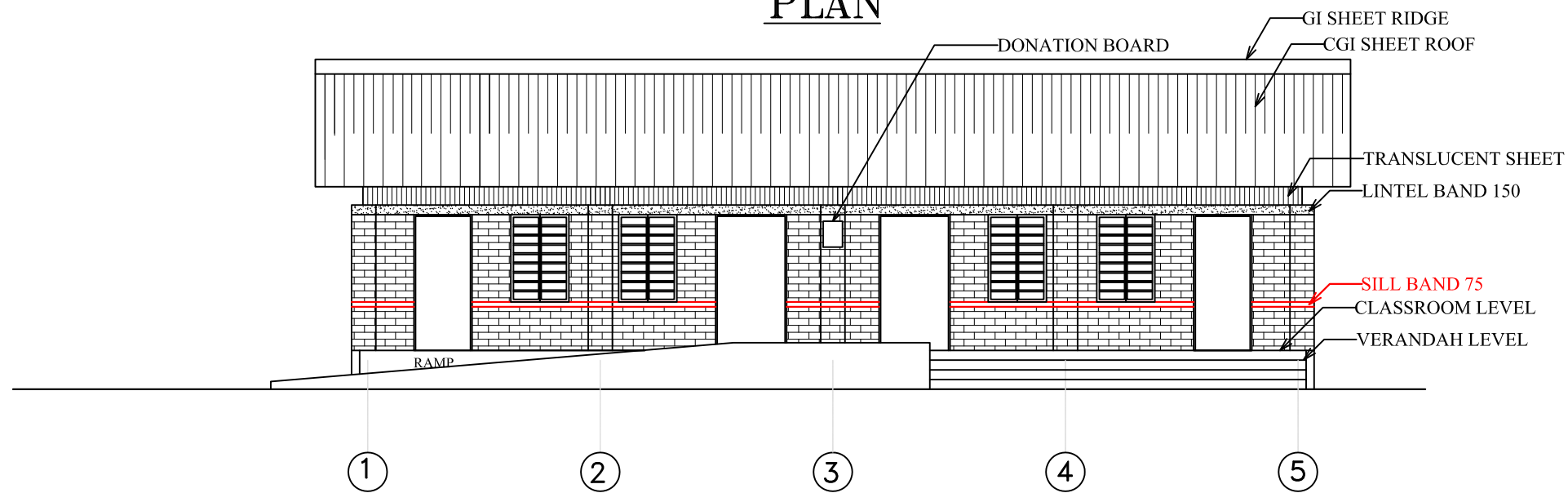
PUBLISHED: April 2016

## DRAWINGS LIST:

- T01. PLAN + FRONT ELEVATION
- T02. BACK ELEVATION + SIDE ELEVATIONS
- T03. SECTION X-X
- T04. SECTION Y-Y
- T05. TRENCH PLAN
- T06. FOUNDATION DETAIL 1
- T07. FOUNDATION DETAIL 2
- T08. LINTEL, BAND & STITCHING BAND DETAILS
- T09. ROOF STRUCTURE PLAN
- T10. DETAIL SECTION OF TRUSS 1
- T11. DETAIL SECTION OF TRUSS 2
- T12. TRUSS DETAIL 1
- T13. TRUSS DETAIL 2
- T14. CEILING PLAN
- TH01. DOOR & WINDOW 1
- TH02. DOOR & WINDOW 2
- TH06. PARTITION WALL



**PLAN**



**FRONT ELEVATION**

NOTE:

THE PROJECT FOR  
BASIC EDUCATION IMPROVEMENT  
IN SUPPORT OF  
SCHOOL SECTOR REFORM PROGRAM

Owner  
GOVERNMENT OF NEPAL  
MINISTRY OF EDUCATION  
DEPARTMENT OF EDUCATION

Purchaser  
JAPAN INTERNATIONAL  
COOPERATION SYSTEM

Consultant  
FUKUWATARI &  
ARCHITECTURAL CONSULTANTS  
LTD.

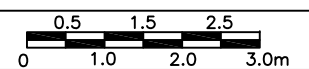
Job Title  
SCHOOL BUILDING  
TERAI TYPE

Sheet Title  
PLAN & ELEVATION

Approved by:

DOE  
FAC  
Date

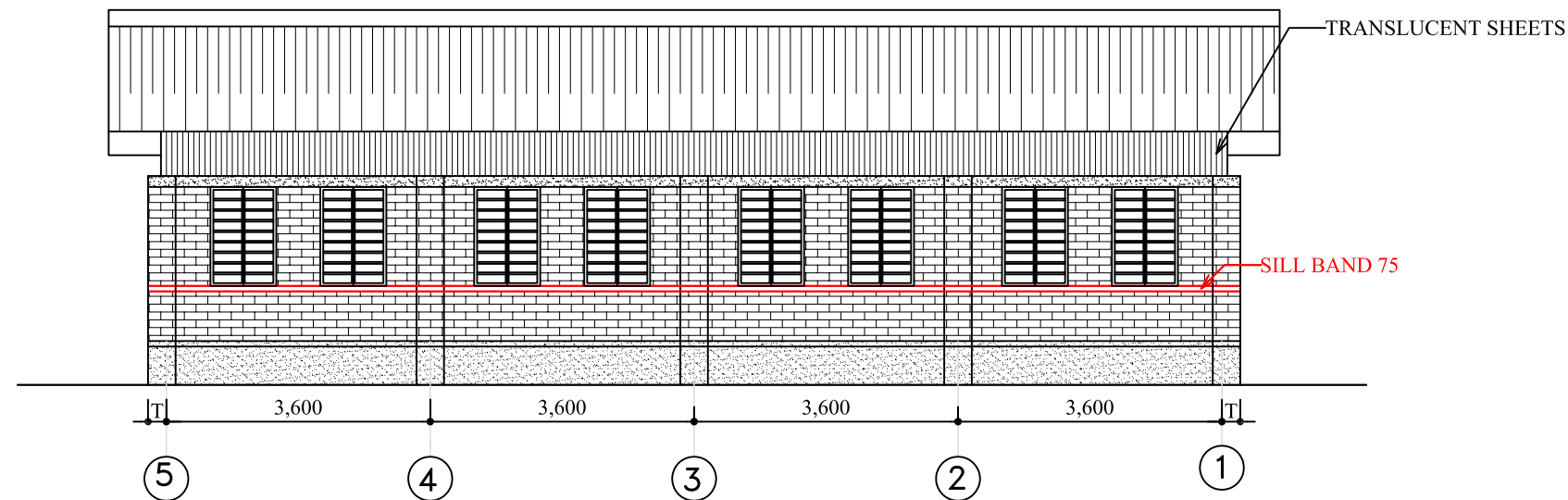
SCALE



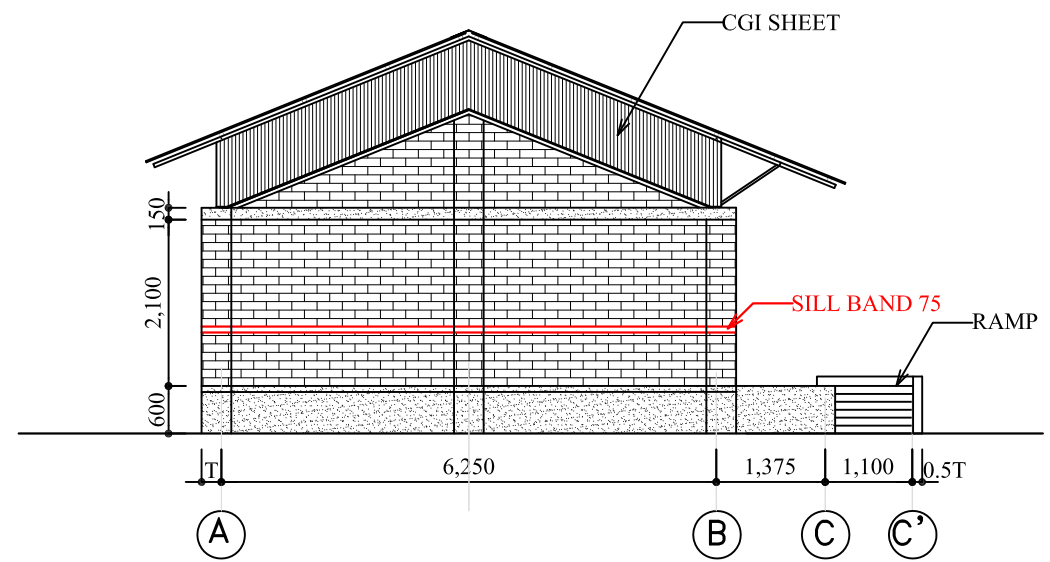
DWG. NO:

**TOIR**

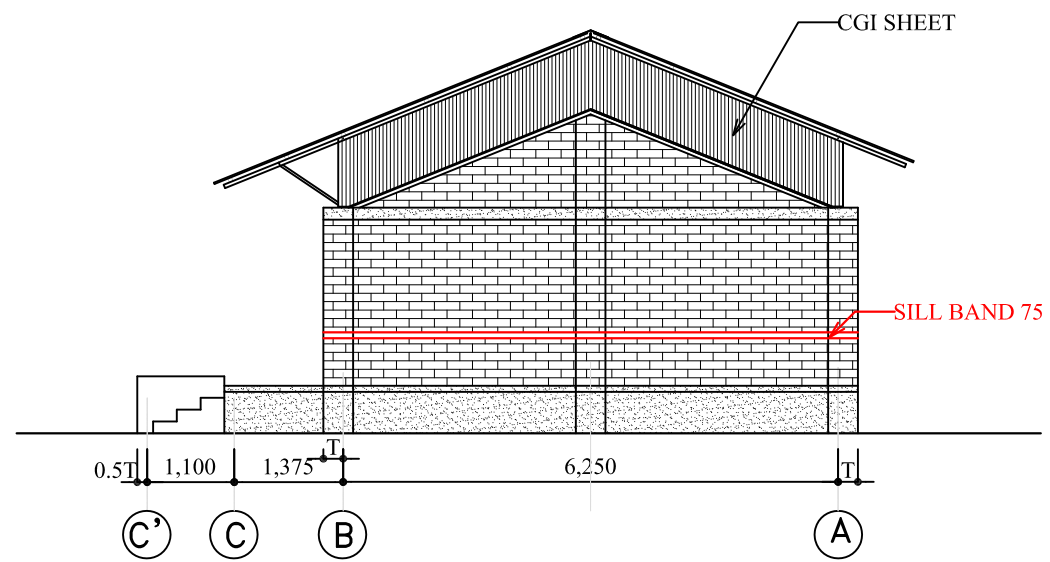
NOTE:



**BACK ELEVATION**



**SIDE ELEVATION**



**SIDE ELEVATION**

THE PROJECT FOR  
BASIC EDUCATION IMPROVEMENT  
IN SUPPORT OF  
SCHOOL SECTOR REFORM PROGRAM

Owner  
GOVERNMENT OF NEPAL  
MINISTRY OF EDUCATION  
DEPARTMENT OF EDUCATION

Purchaser  
JAPAN INTERNATIONAL  
COOPERATION SYSTEM

Consultant  
FUKUWATARI &  
ARCHITECTURAL CONSULTANTS  
LTD.

Job Title  
SCHOOL BUILDING  
TERAI TYPE

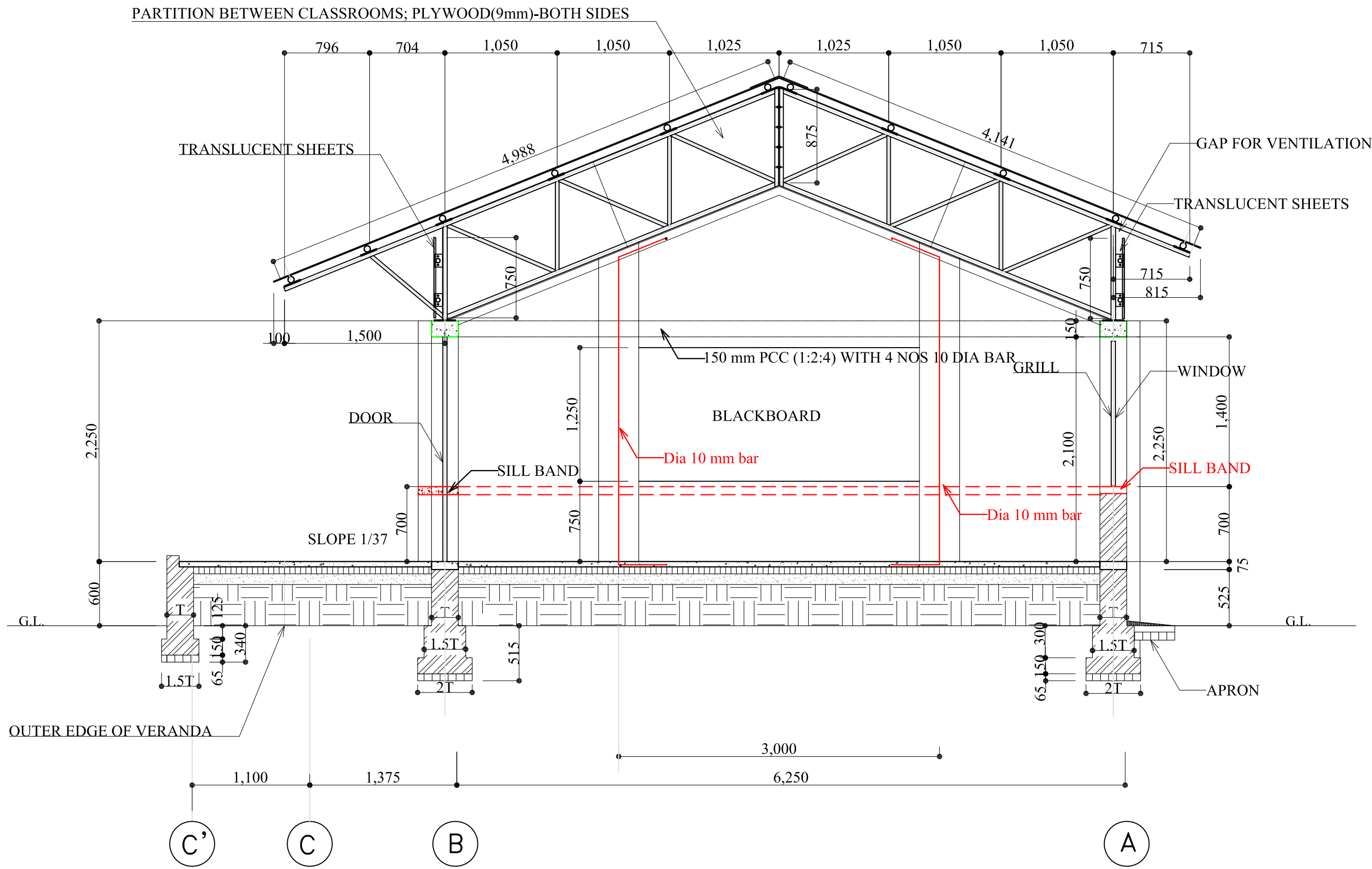
Sheet Title  
BACK & SIDE ELEVATIONS

Approved by:  
DOE  
FAC  
Date

SCALE  
0 0.5 1.0 1.5 2.0 2.5 3.0m  
DWG. NO: **T02R**

NOTE:

1. RAFTERS ARE OF NB 32L.
2. STRUTS ARE OF NB 25L.
3. PURLINS ARE OF NB 50L.
4. POSTS ARE OF NB 80L.
5. TRUSS SHOWN IN THIS SHEET REFERS TO TRUSSES ALONG AXES 2, 3 & 4 ONLY.



### SECTION AT X-X

THE PROJECT FOR  
BASIC EDUCATION IMPROVEMENT  
IN SUPPORT OF  
SCHOOL SECTOR REFORM PROGRAM

Owner  
GOVERNMENT OF NEPAL  
MINISTRY OF EDUCATION  
DEPARTMENT OF EDUCATION

Purchaser  
JAPAN INTERNATIONAL  
COOPERATION SYSTEM

Consultant  
FUKUWATARI &  
ARCHITECTURAL CONSULTANTS  
LTD.

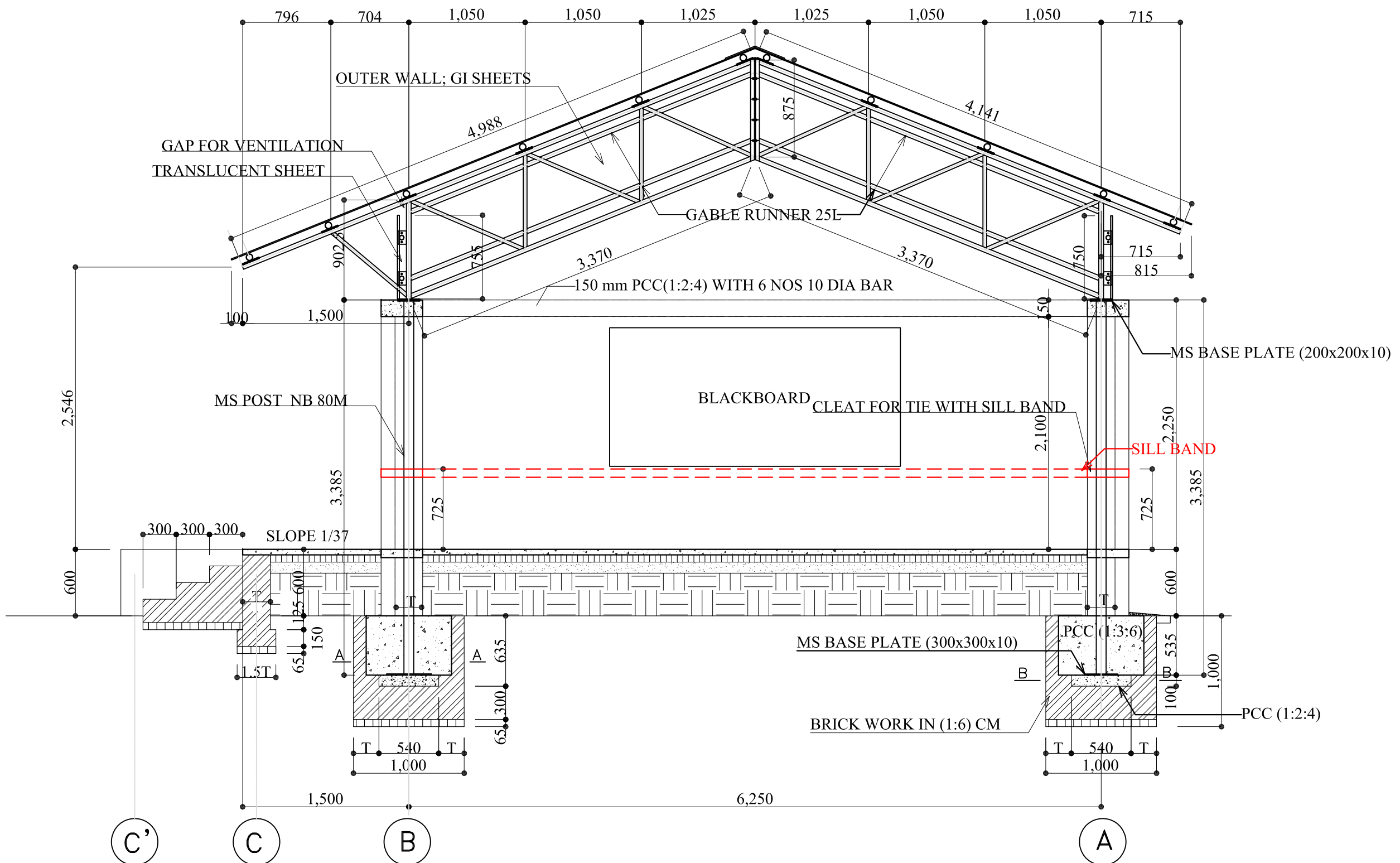
Job Title  
SCHOOL BUILDING  
TERAI TYPE

Sheet Title  
SECTION X-X

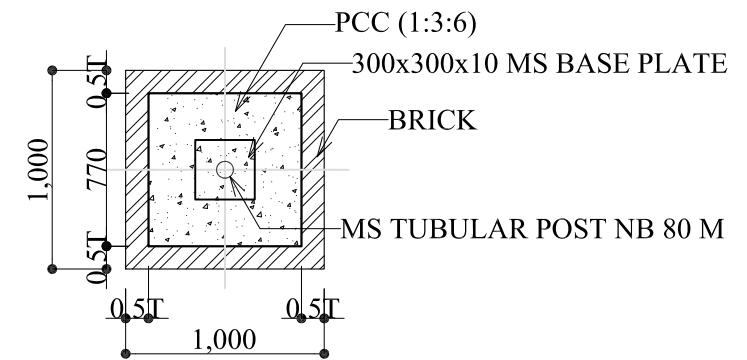
Approved by:

DOE	
FAC	
Date	
SCALE	
DWG. NO:	<b>T-03R</b>

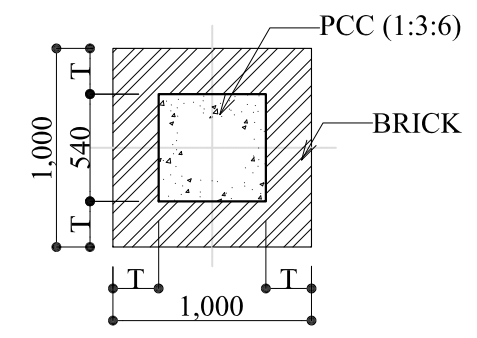
- NOTE:
1. RAFTERS ARE OF NB 32L.
  2. STRUTS ARE OF NB 25L.
  3. PURLINS ARE OF NB 50L.
  4. POSTS ARE OF NB 80L.
  5. TRUSS SHOWN IN THIS SHEET REFERS TO TRUSSES ALONG AXES 2, 3 & 4 ONLY.



**SECTION AT Y-Y**



**A-A**



**B-B**

THE PROJECT FOR  
BASIC EDUCATION IMPROVEMENT  
IN SUPPORT OF  
SCHOOL SECTOR REFORM PROGRAM

Owner  
GOVERNMENT OF NEPAL  
MINISTRY OF EDUCATION  
DEPARTMENT OF EDUCATION

Purchaser  
JAPAN INTERNATIONAL  
COOPERATION SYSTEM

Consultant  
FUKUWATARI &  
ARCHITECTURAL CONSULTANTS  
LTD.

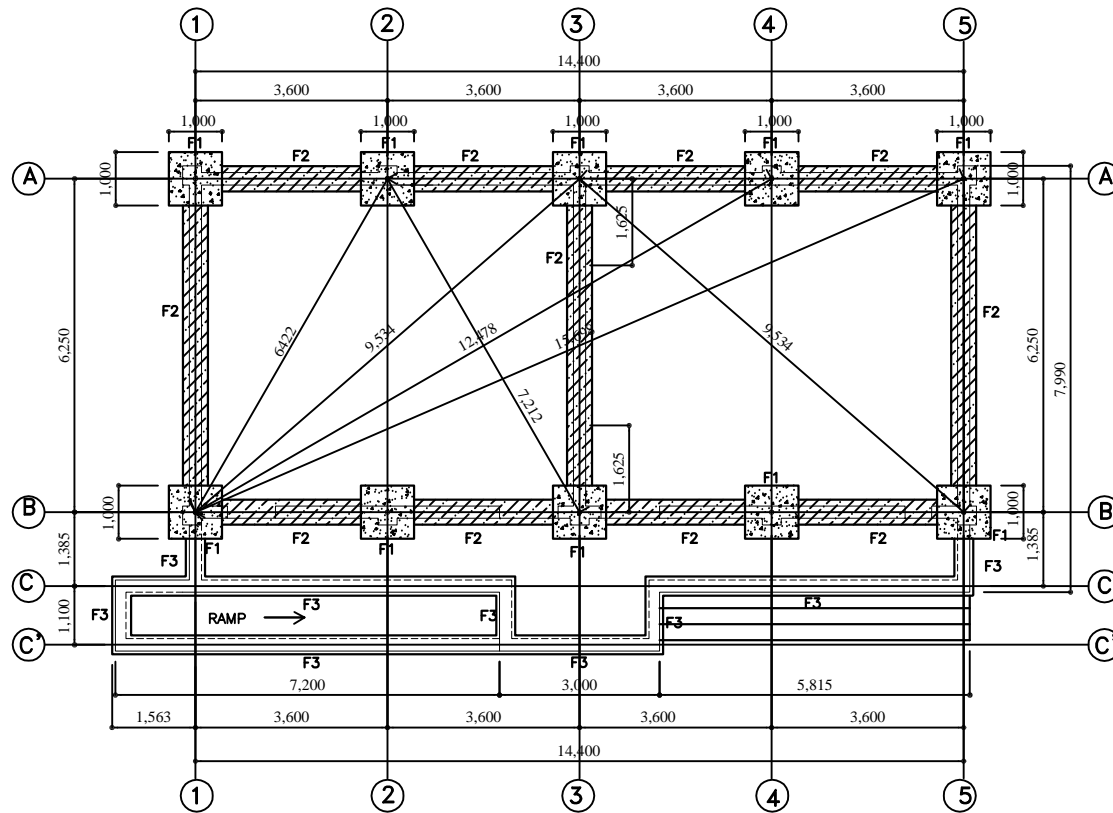
Job Title  
SCHOOL BUILDING  
TERAI TYPE

Sheet Title  
SECTION Y-Y

Approved by:

DOE  
FAC  
Date

SCALE  
0 0.5 1.0 1.5 2.0 2.5 3.0m  
DWG. NO: **T-04R**



**TRENCH PLAN**

NOTE:

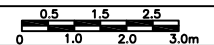
GOVERNMENT OF NEPAL  
MINISTRY OF EDUCATION  
DEPARTMENT OF EDUCATION

SCHOOL BUILDING  
TWO ROOM  
STEEL FRAME STRUCTURE

Sheet Title

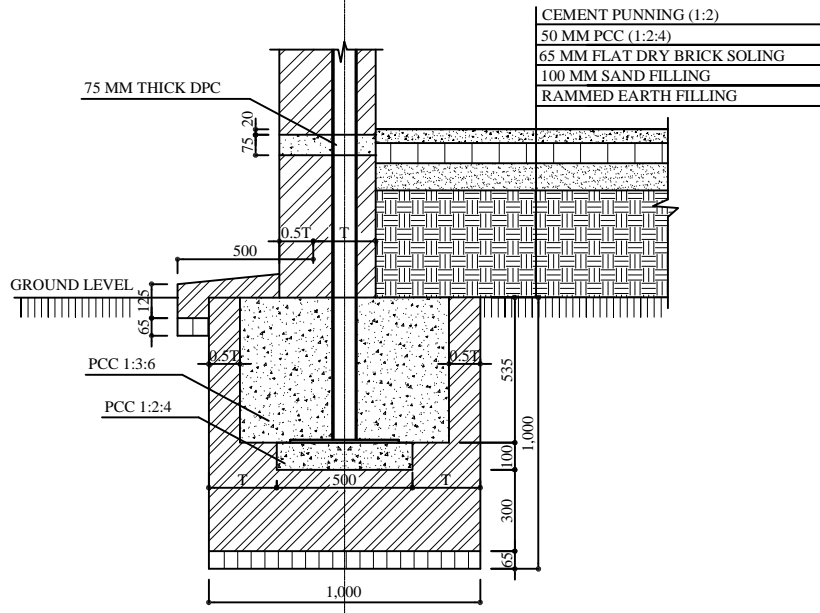
TRENCH PLAN

SCALE

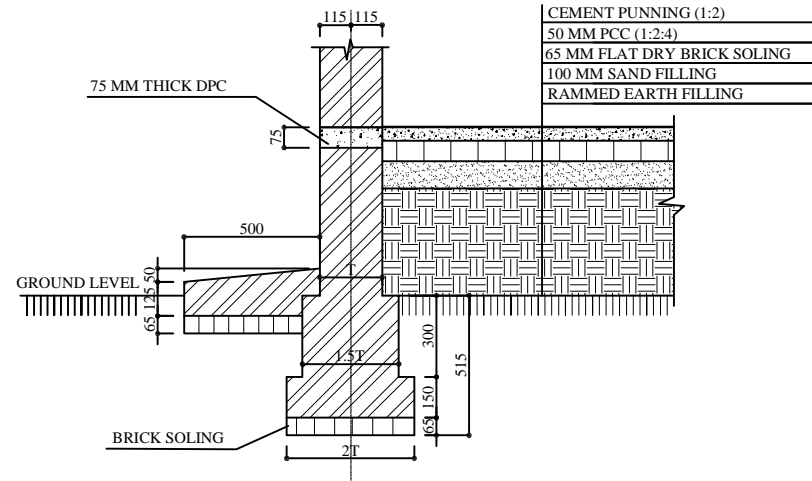


DWG. NO:

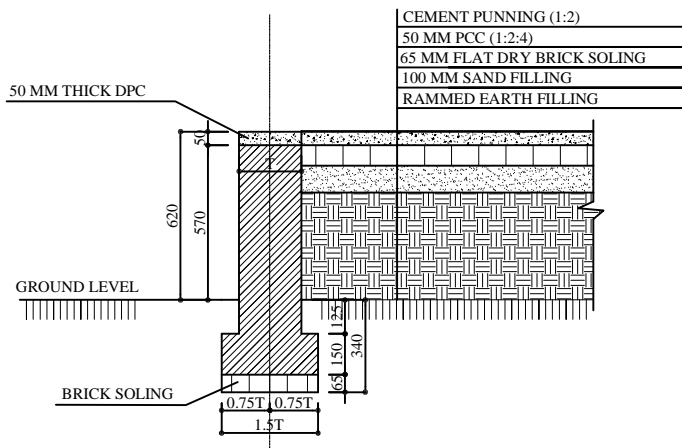
T 05



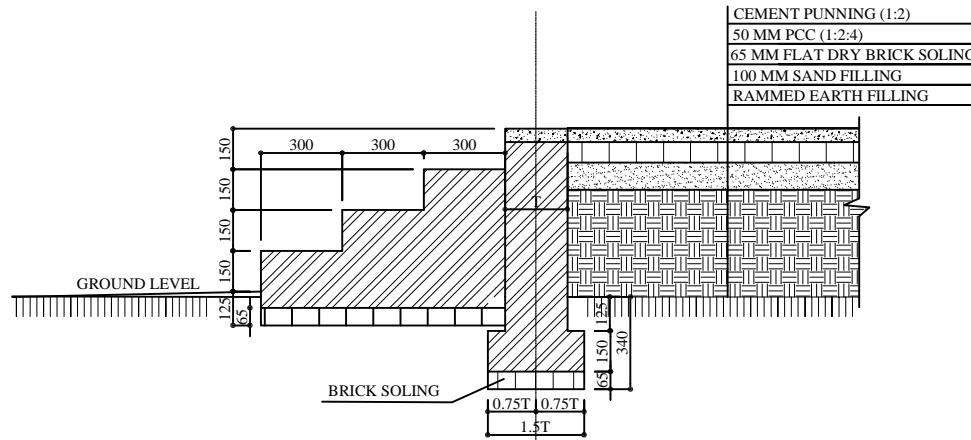
F1 TYPE



F2 TYPE



F3 TYPE



DETAIL OF STEPS

NOTE:

GOVERNMENT OF NEPAL  
MINISTRY OF EDUCATION  
DEPARTMENT OF EDUCATION

SCHOOL BUILDING  
TWO ROOM  
STEEL FRAME STRUCTURE

Sheet Title

FOUNDATION DETAIL

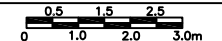
Approved by:

DOE

FAC

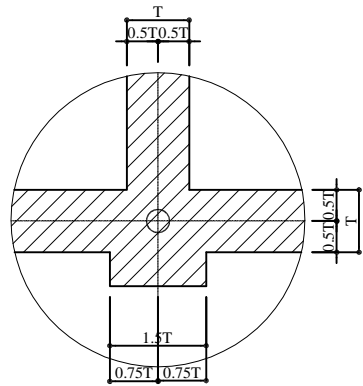
Date

SCALE

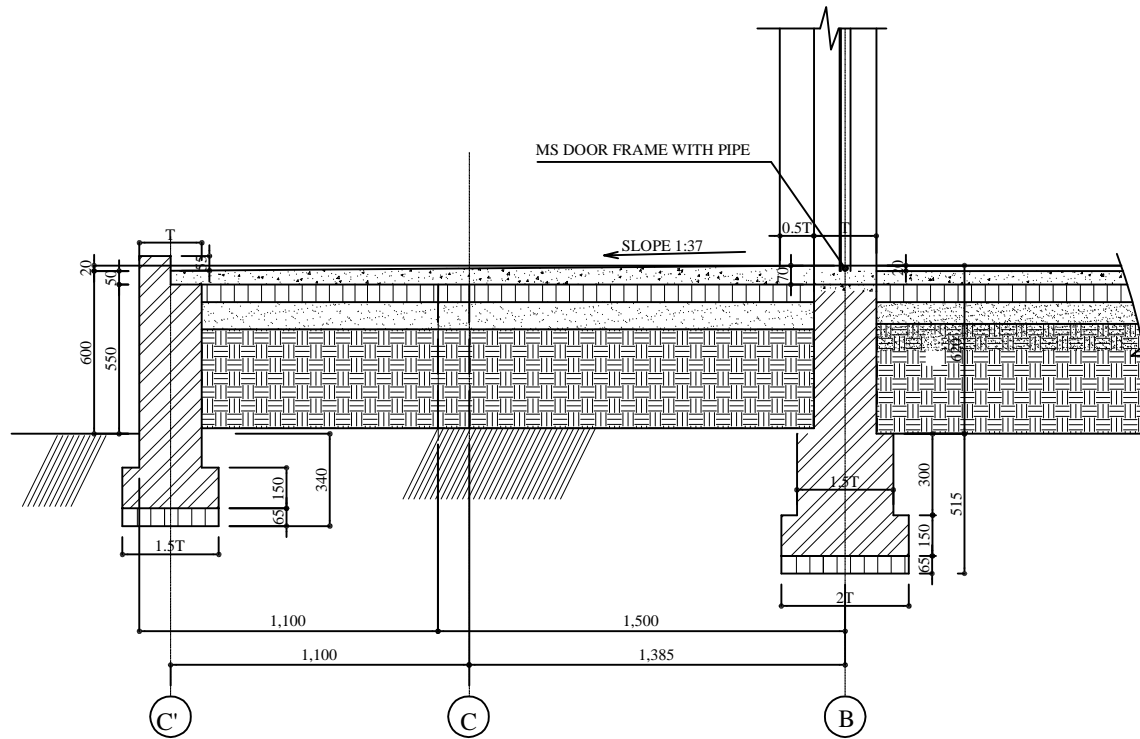


DWG. NO:

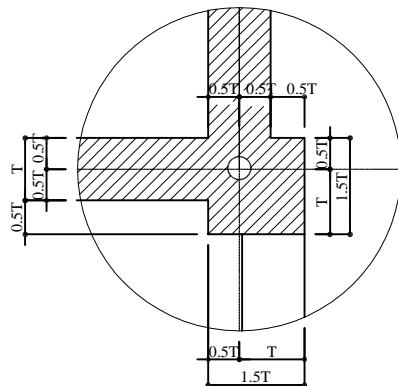
T - 06



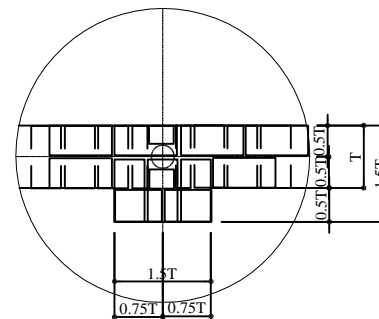
DETAIL AT BUTTRESS



DETAIL OF VERANDAH



DETAIL OF FRONT CORNER BUTTRESS  
WITH VERANDAH WALL



DETAIL OF BRICK LAYING

NOTE:

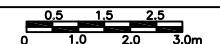
GOVERNMENT OF NEPAL  
MINISTRY OF EDUCATION  
DEPARTMENT OF EDUCATION

SCHOOL BUILDING  
TWO ROOM  
STEEL FRAME STRUCTURE

Sheet Title

FOUNDATION DETAIL

SCALE

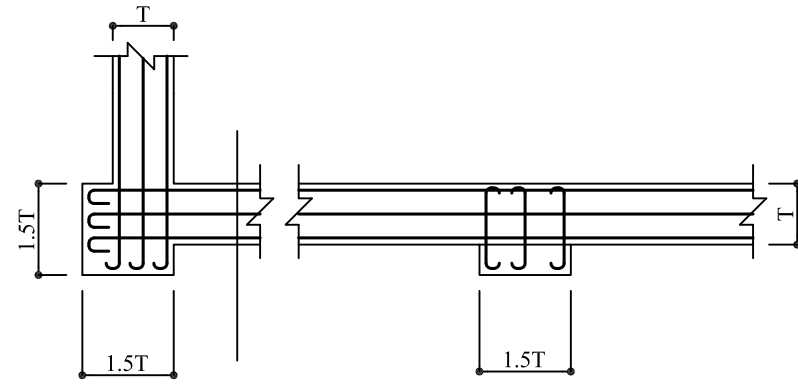


DWG. NO:

T-O7

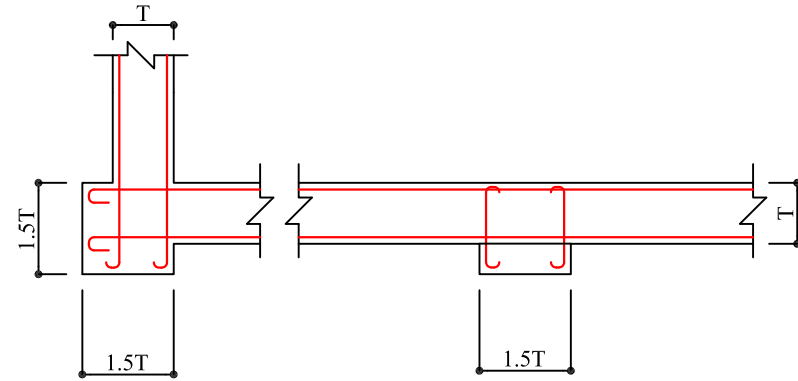


# PLAN FOR DPC AND GABLE BANDS

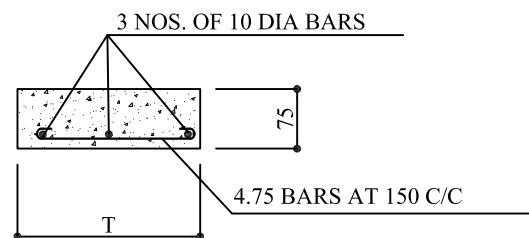


NOTE:  
4.75 DIA BARS TO BE KEPT AT 150 C/C ALL ALONG THE LENGTH OF MAIN BAR

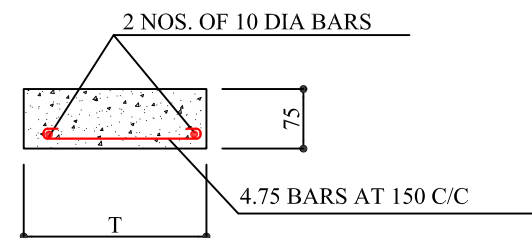
# PLAN FOR SILL & LINTEL BANDS



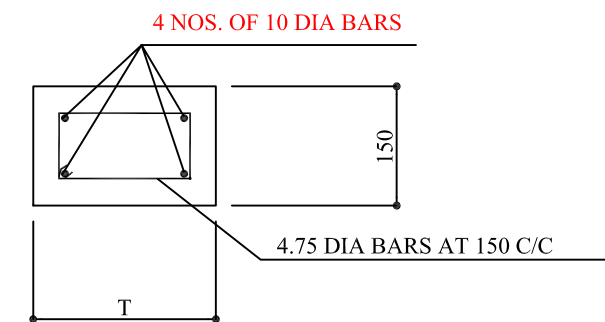
# SECTIONS OF BANDS



DPC & GABLE BANDS



SILL BAND



LINTEL BAND

NOTE:

THE PROJECT FOR  
BASIC EDUCATION IMPROVEMENT  
IN SUPPORT OF  
SCHOOL SECTOR REFORM PROGRAM

Owner  
GOVERNMENT OF NEPAL  
MINISTRY OF EDUCATION  
DEPARTMENT OF EDUCATION

Purchaser  
JAPAN INTERNATIONAL  
COOPERATION SYSTEM

Consultant  
FUKUWATARI &  
ARCHITECTURAL CONSULTANTS  
LTD.

Job Title  
SCHOOL BUILDING  
TERAI TYPE

Sheet Title  
LINTEL BAND &  
STITCHING BAND  
DETAILS

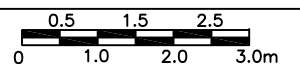
Approved by:

DOE

FAC

Date

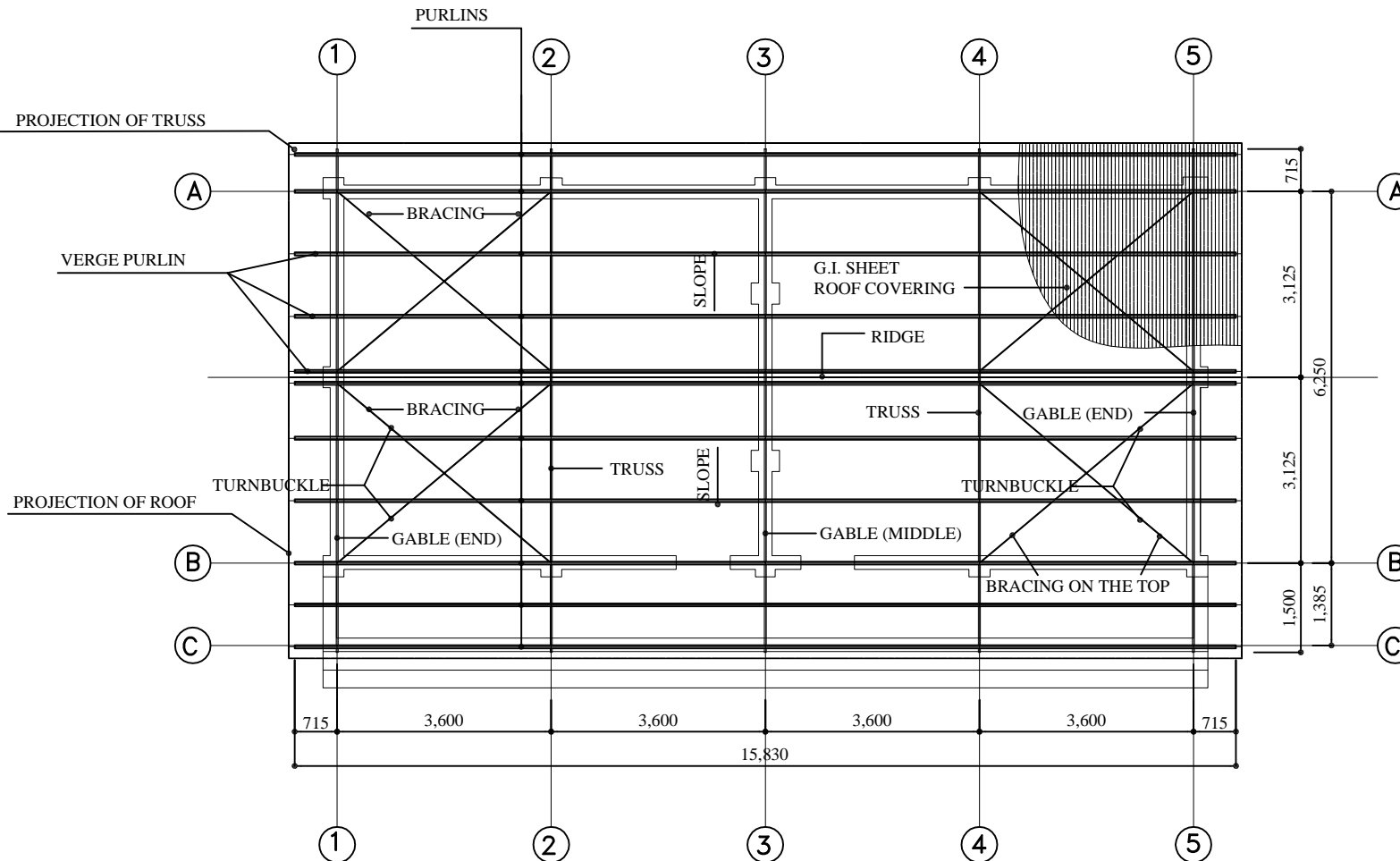
SCALE



DWG. NO:

T-08R

NOTE:



**PLAN**  
SCALE=1:80

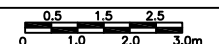
GOVERNMENT OF NEPAL  
MINISTRY OF EDUCATION  
DEPARTMENT OF EDUCATION

SCHOOL BUILDING  
TWO ROOM  
STEEL FRAME STRUCTURE

Sheet Title

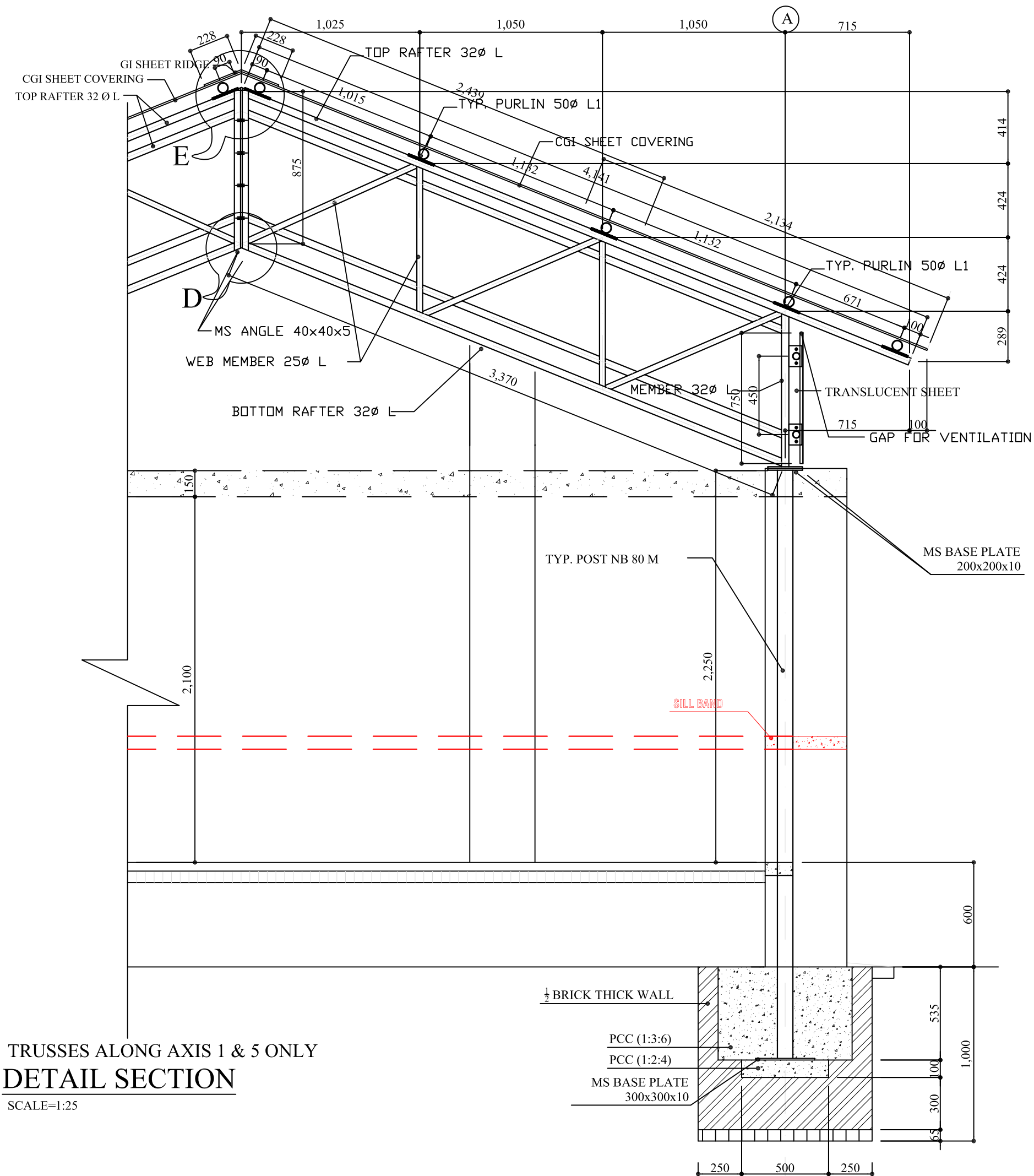
STRUCTURAL PLAN  
OF TRUSS

SCALE



DWG. NO:

T-09



- NOTE:
1. RAFTERS ARE OF NB 32L.
  2. STRUTS ARE OF NB 25L.
  3. PURLINS ARE OF NB 50L.
  4. POSTS ARE OF NB 80L.
  5. TRUSS IN THIS SHEET REFERS TO THE TRUSSES ALONG AXES 2, 3 & 4 ONLY.

THE PROJECT FOR  
 BASIC EDUCATION IMPROVEMENT  
 IN SUPPORT OF  
 SCHOOL SECTOR REFORM PROGRAM

Owner  
 GOVERNMENT OF NEPAL  
 MINISTRY OF EDUCATION  
 DEPARTMENT OF EDUCATION

Purchaser  
 JAPAN INTERNATIONAL  
 COOPERATION SYSTEM

Consultant  
 FUKUWATARI &  
 ARCHITECTURAL CONSULTANTS  
 LTD.

Job Title  
 SCHOOL BUILDING  
 TERAI TYPE

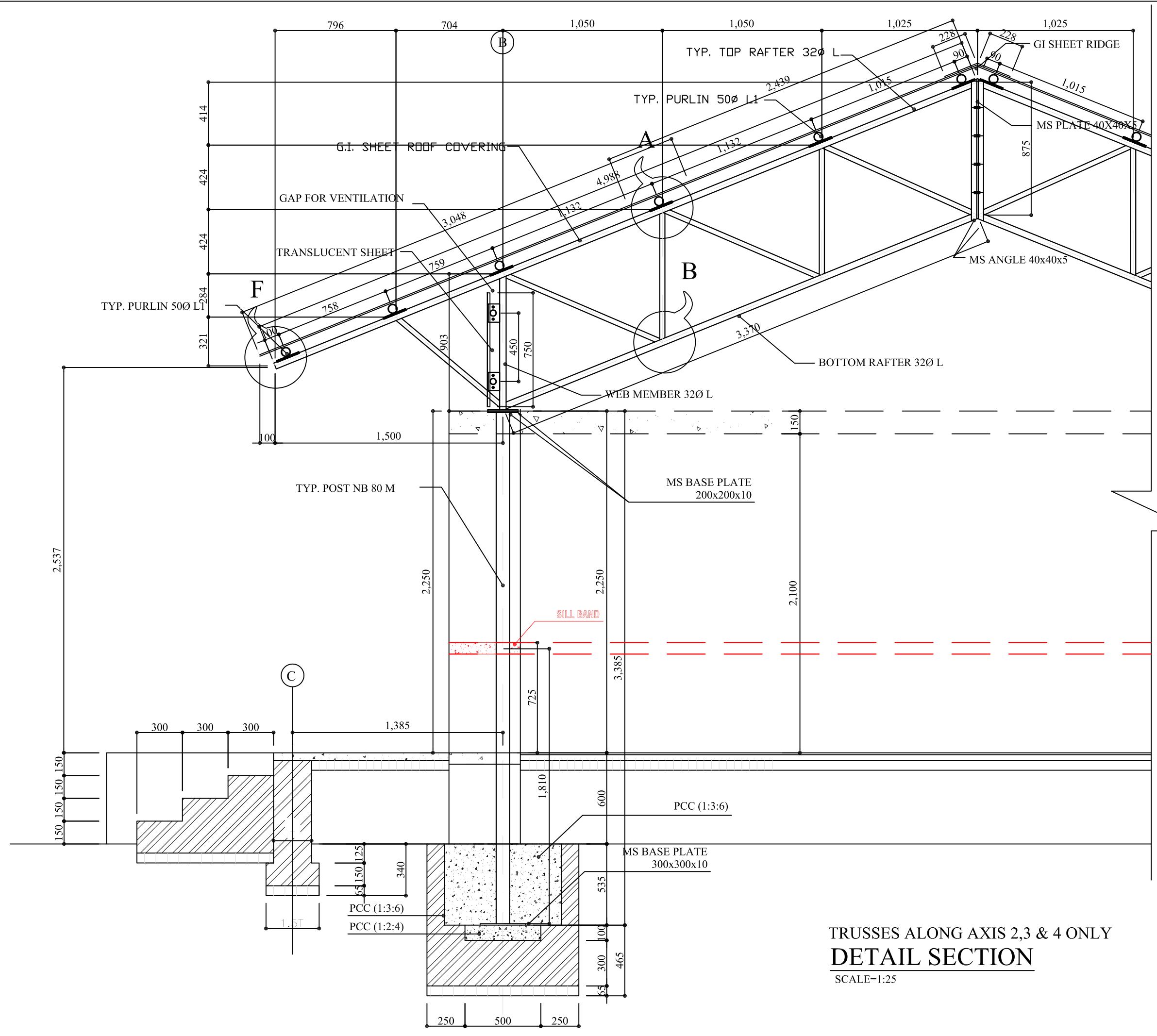
Sheet Title  
 DETAIL SECTION  
 OF TRUSS

Approved by:

DOE	
FAC	
Date	

SCALE

DWG. NO: **T10R**



- NOTE:
1. RAFTERS ARE OF NB 32L.
  2. STRUTS ARE OF NB 25L.
  3. PURLINS ARE OF NB 50L.
  4. POSTS ARE OF NB 80L.
  5. TRUSS IN THIS SHEET REFERS TO THE TRUSSES ALONG AXES 2, 3 & 4 ONLY.

THE PROJECT FOR  
BASIC EDUCATION IMPROVEMENT  
IN SUPPORT OF  
SCHOOL SECTOR REFORM PROGRAM

Owner  
GOVERNMENT OF NEPAL  
MINISTRY OF EDUCATION  
DEPARTMENT OF EDUCATION

Purchaser  
JAPAN INTERNATIONAL  
COOPERATION SYSTEM

Consultant  
FUKUWATARI &  
ARCHITECTURAL CONSULTANTS  
LTD.

Job Title  
SCHOOL BUILDING  
TERAI TYPE

Sheet Title  
DETAIL SECTION  
OF TRUSS

Approved by:

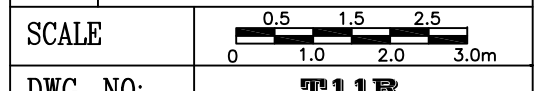
DOE

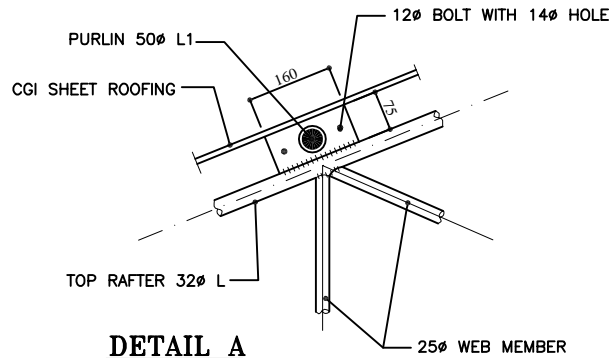
FAC

Date

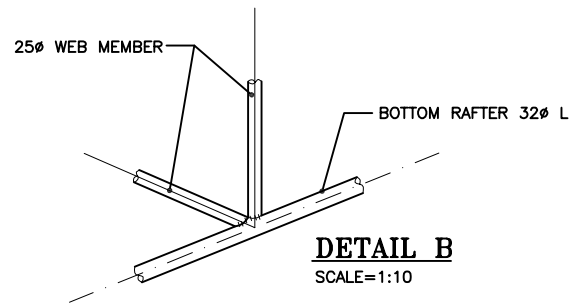
DWG. NO: **T11R**

TRUSSES ALONG AXIS 2,3 & 4 ONLY  
**DETAIL SECTION**  
SCALE=1:25

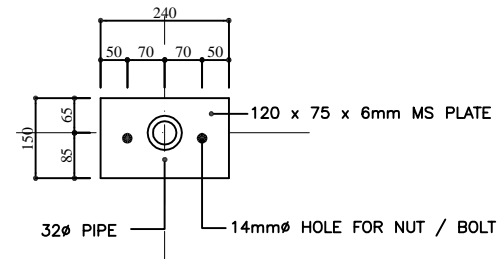




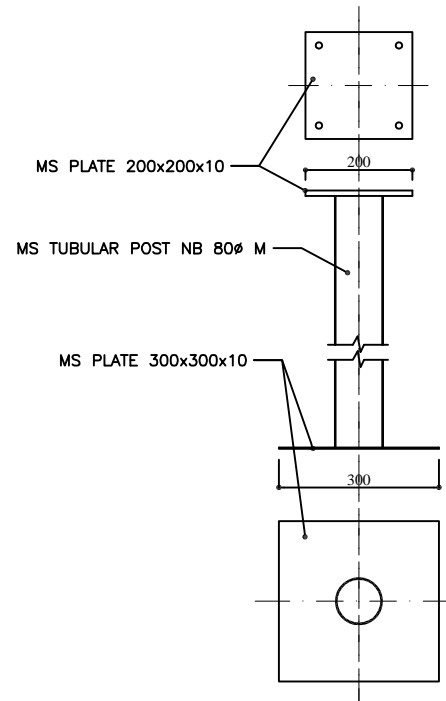
**DETAIL A**



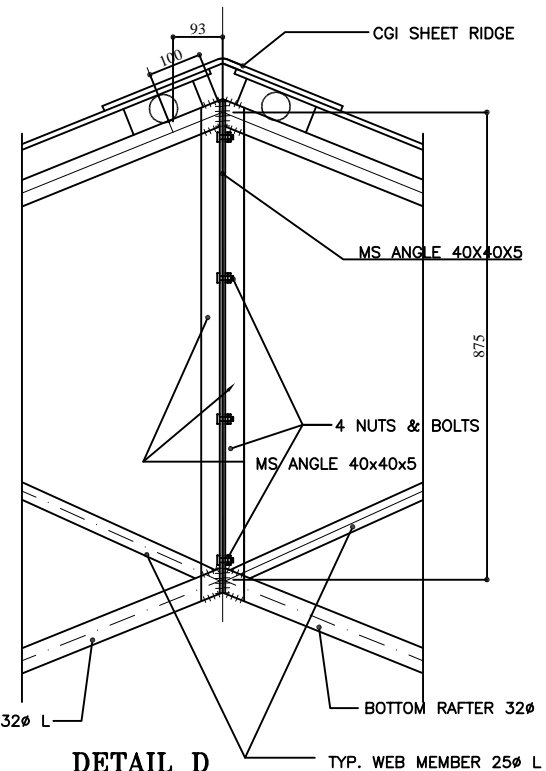
**DETAIL B**  
SCALE=1:10



**120 x 75 x 6mm  
MS PLATE ELEVATION**  
SCALE=1:5



**DETAIL OF POST**  
SCALE=1:10



**DETAIL D**  
SCALE=1:10

NOTE:

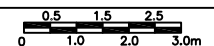
GOVERNMENT OF NEPAL  
MINISTRY OF EDUCATION  
DEPARTMENT OF EDUCATION

SCHOOL BUILDING  
TWO ROOM  
STEEL FRAME STRUCTURE

Sheet Title

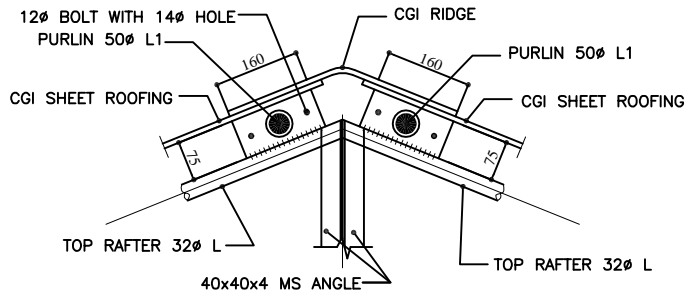
DETAIL OF TRUSS

SCALE

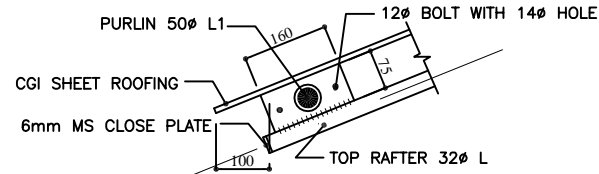


DWG. NO:

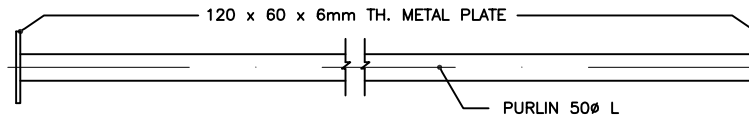
T 12



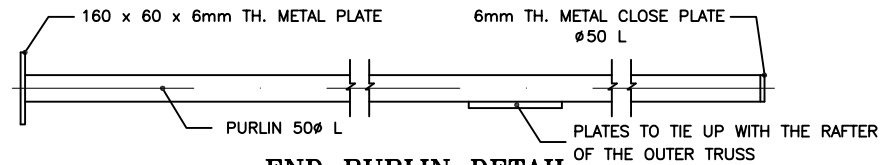
**DETAIL E**  
SCALE=1:10



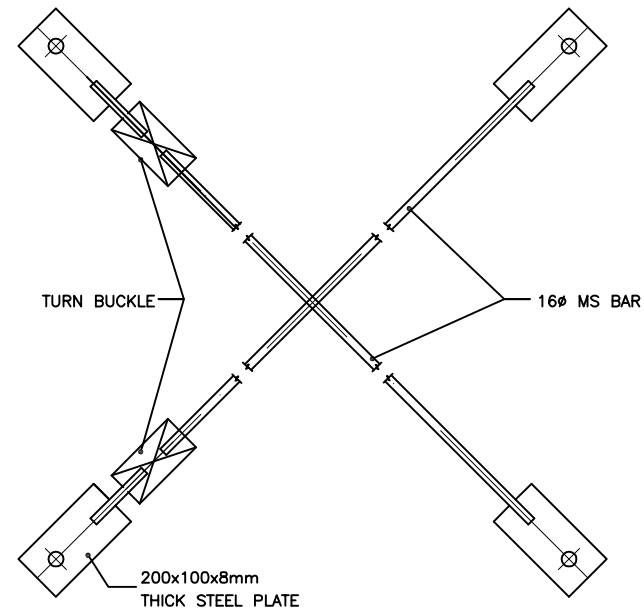
**DETAIL F**  
SCALE=1:10



**MIDDLE PURLIN DETAIL**  
SCALE 1:10



**END PURLIN DETAIL**  
SCALE 1:10



**BRACE INTERSECTION DETAIL**  
SCALE 1:10

NOTE:

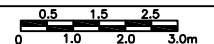
GOVERNMENT OF NEPAL  
MINISTRY OF EDUCATION  
DEPARTMENT OF EDUCATION

SCHOOL BUILDING  
TWO ROOM  
STEEL FRAME STRUCTURE

Sheet Title

DETAIL OF TRUSS

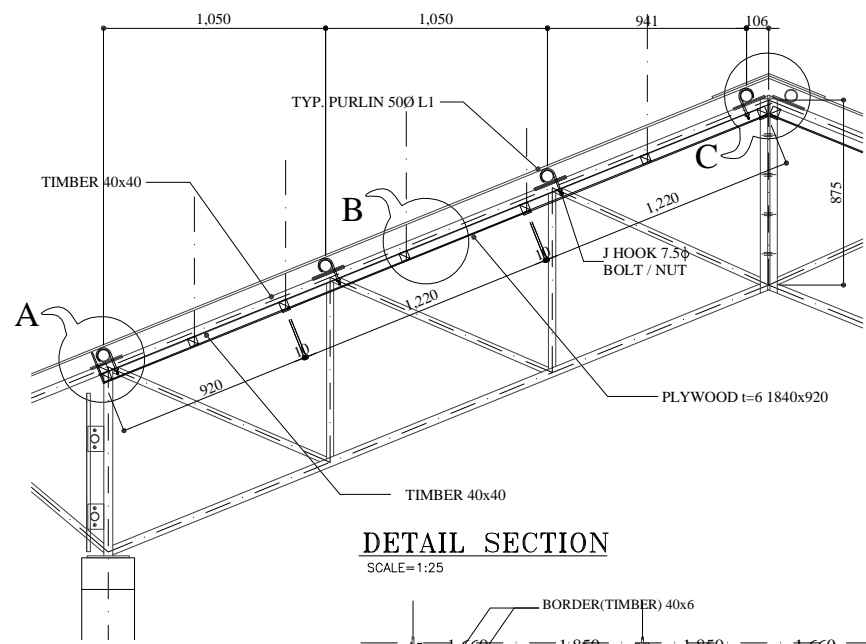
SCALE



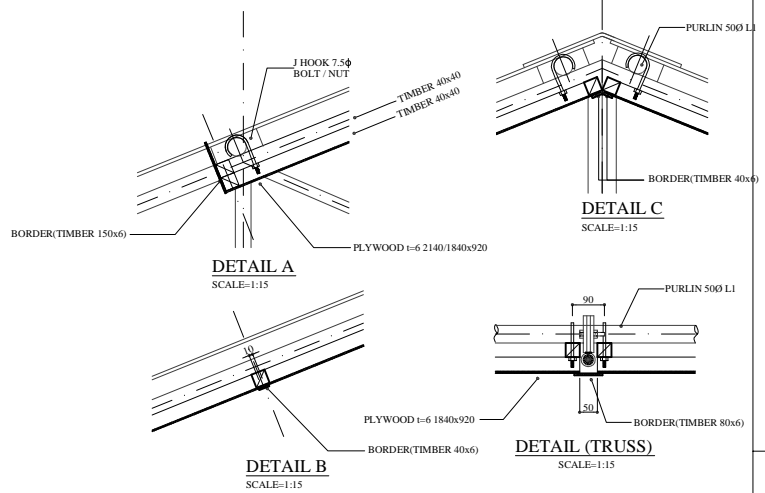
DWG. NO:

T 13

NOTE:



**DETAIL SECTION**  
SCALE=1:25

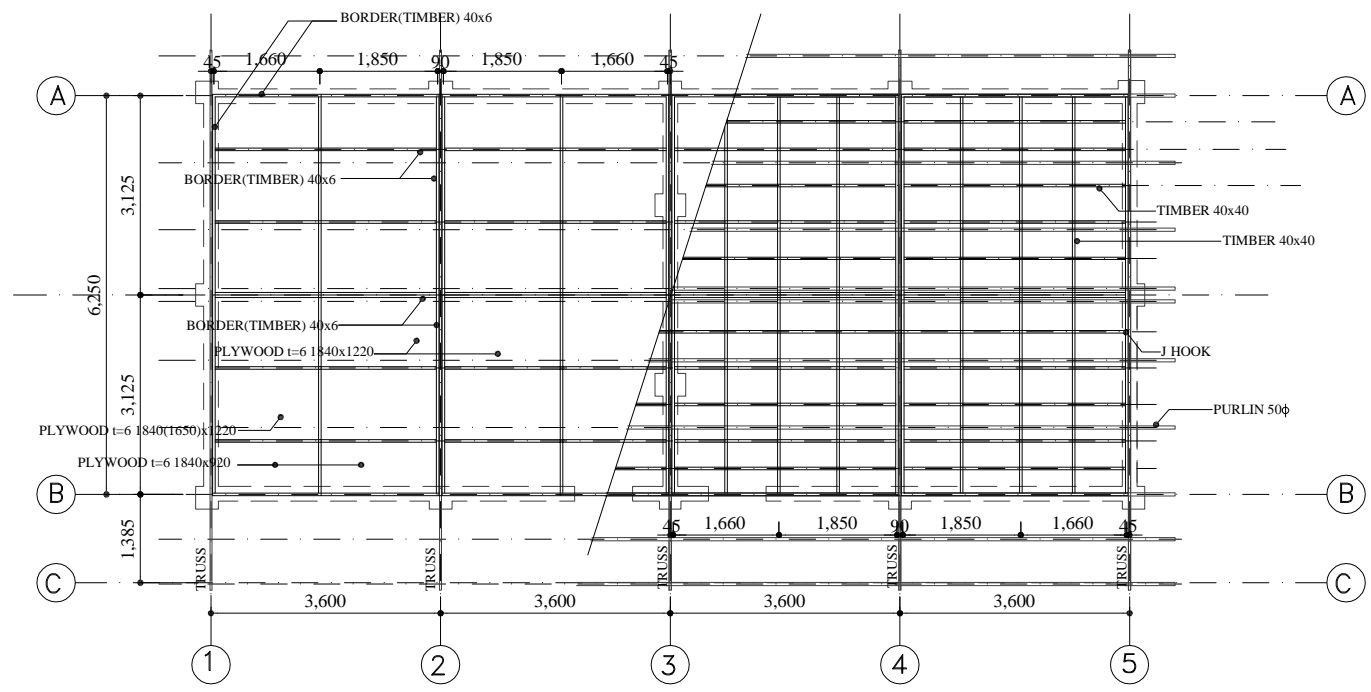


**DETAIL A**  
SCALE=1:15

**DETAIL C**  
SCALE=1:15

**DETAIL B**  
SCALE=1:15

**DETAIL (TRUSS)**  
SCALE=1:15



**REFLECTED CEILING PLAN**  
SCALE=1:80

GOVERNMENT OF NEPAL  
MINISTRY OF EDUCATION  
DEPARTMENT OF EDUCATION

SCHOOL BUILDING  
TWO ROOM  
STEEL FRAME STRUCTURE

Sheet Title  
CEILING PLAN/DETAIL

SCALE	0 0.5 1.5 2.5 3.0m
DWG. NO:	T - 14

**DOOR SHUTTER**

**DOOR FRAME & SHUTTER**

NOTE:

1. DOOR & WINDOW SHUTTERS SHOULD FIT EXACTLY IN THE FRAMES FOR WHICH THEY ARE MANUFACTURED.
2. THREE NUMBERS OF HINGES OF 150 MM LENGTH ARE WELDED ON DOOR FRAMES.
3. FOUR NUMBERS OF HINGES OF 75 MM LENGTH ARE WELDED ON WINDOW FRAMES.
4. PROVISION WILL BE MADE ON DOOR FRAMES FOR FITTING THE SLIDING BAR LOCKING SET ON THE OUTER PART OF DOORS AS WELL AS TWO NUMBERS OF TOWER BOLTS FROM INSIDE.
5. PROVISION WILL BE MADE ON WINDOW FRAMES FOR FIXING FOUR NUMBERS OF TOWER BOLTS FROM INSIDE.
6. ALL FRAMES FOR DOOR AND WINDOW SHUTTERS SHALL BE OF SALWOOD OR EQUIVALENT HARDWOOD MATERIAL.
7. 100 mm LONG 25x25x3 ANGLE PIECES SHALL BE KEPT AT 8 PLACES ON DOOR FRAMES AND AT 6 PLACES ON WINDOW FRAMES FOR THE PROVISION OF SHUTTER OPENING LATER.

"D" TYPE (LEFT)

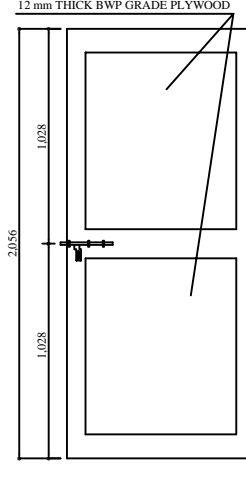
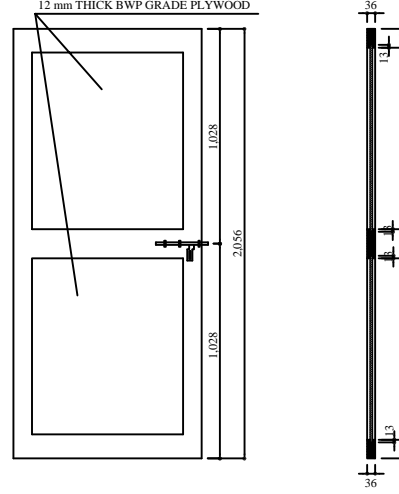
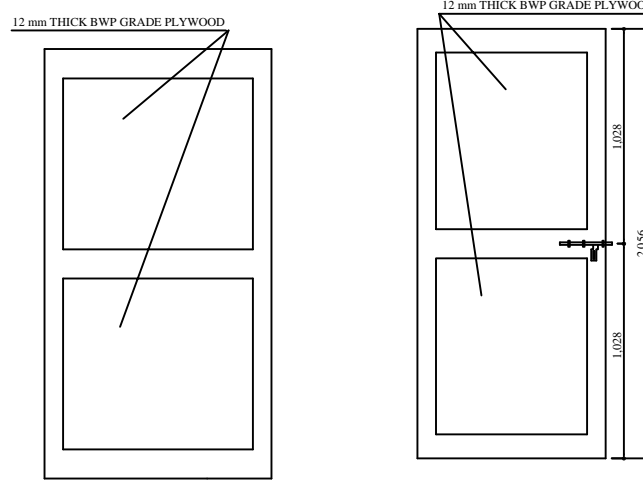
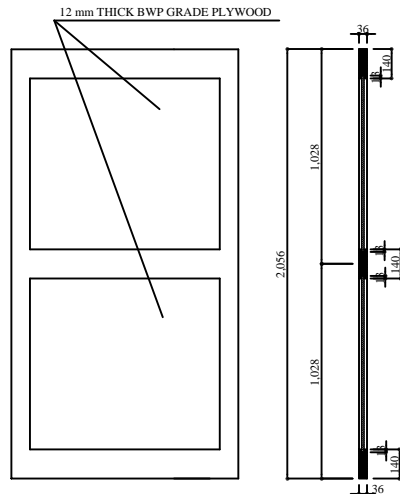
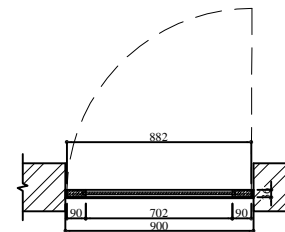
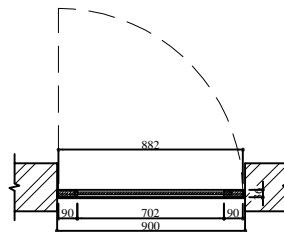
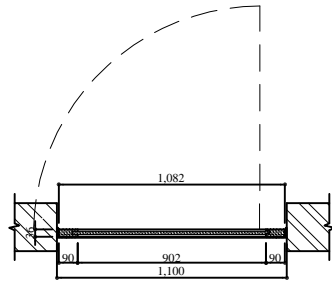
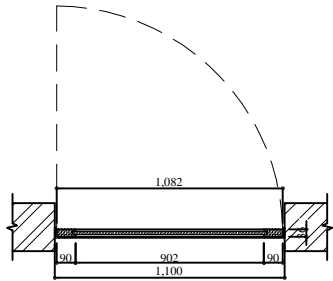
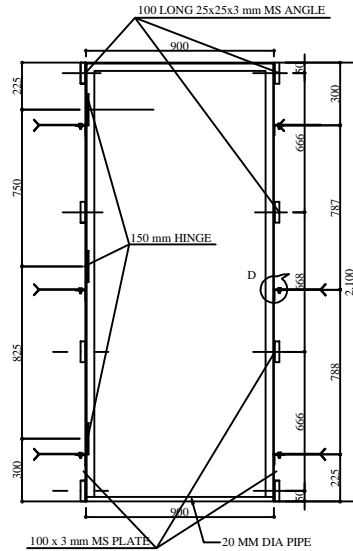
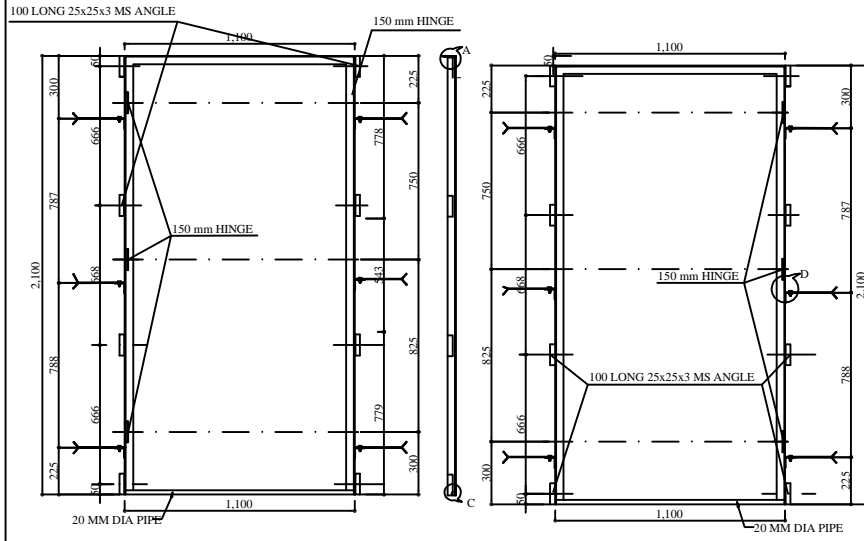
"D" TYPE

"D" TYPE (RIGHT)

"D1" TYPE (LEFT)

"D1" TYPE

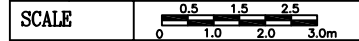
"D1" TYPE (RIGHT)



GOVERNMENT OF NEPAL  
MINISTRY OF EDUCATION  
DEPARTMENT OF EDUCATION

SCHOOL BUILDING  
TWO ROOM  
STEEL FRAME STRUCTURE

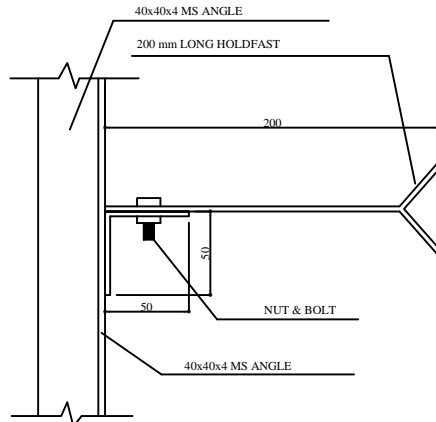
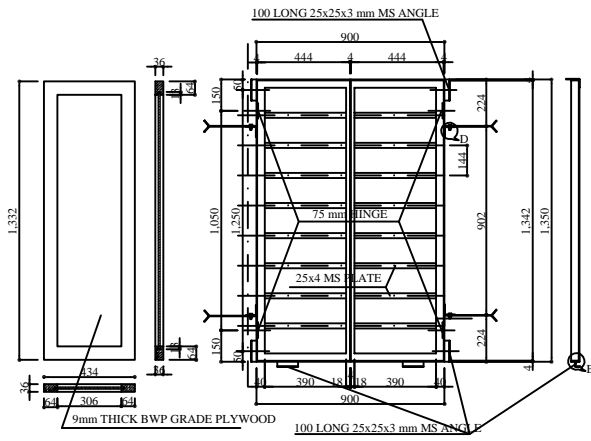
Sheet Title  
DOOR / WINDOW  
FRAMES & SHUTTERS



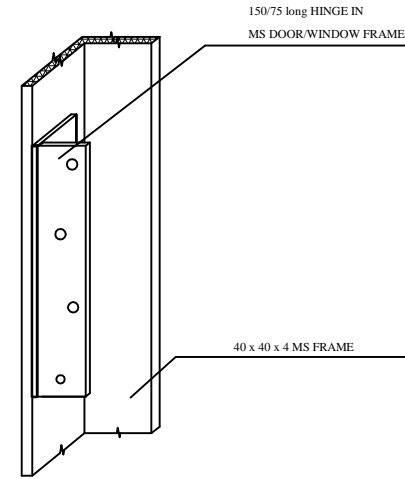
DWG. NO: THO1



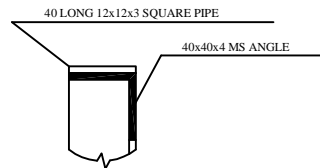
# MS WINDOW FRAME & SHUTTER



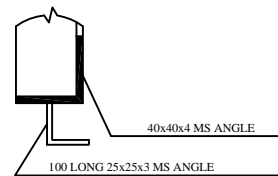
**DETAIL AT "D"**



**DETAIL AT HINGE**



**DETAIL AT "A"**



**DETAIL AT "B"**



**DETAIL AT "C"**

**NOTE:**

1. DOOR & WINDOW SHUTTERS SHOULD FIT EXACTLY IN THE FRAMES FOR WHICH THEY ARE MANUFACTURED.
2. THREE NUMBERS OF HINGES OF 150 MM LENGTH ARE WELDED ON DOOR FRAMES.
3. FOUR NUMBERS OF HINGES OF 75 MM LENGTH ARE WELDED ON WINDOW FRAMES.
4. PROVISION WILL BE MADE ON DOOR FRAMES FOR FITTING THE SLIDING BAR LOCKING SET ON THE OUTER PART OF DOORS AS WELL AS TWO NUMBERS OF TOWER BOLTS FROM INSIDE.
5. PROVISION WILL BE MADE ON WINDOW FRAMES FOR FIXING FOUR NUMBERS OF TOWER BOLTS FROM INSIDE.
6. ALL FRAMES FOR DOOR AND WINDOW SHUTTERS SHALL BE OF SALWOOD OR EQUIVALENT HARDWOOD MATERIAL.
7. 100 mm LONG 25x25x3 ANGLE PIECES SHALL BE KEPT AT 8 PLACES ON DOOR FRAMES AND AT 6 PLACES ON WINDOW FRAMES FOR THE PROVISION OF SHUTTER OPENING LATER.

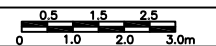
GOVERNMENT OF NEPAL  
MINISTRY OF EDUCATION  
DEPARTMENT OF EDUCATION

SCHOOL BUILDING  
TWO ROOM  
STEEL FRAME STRUCTURE

Sheet Title

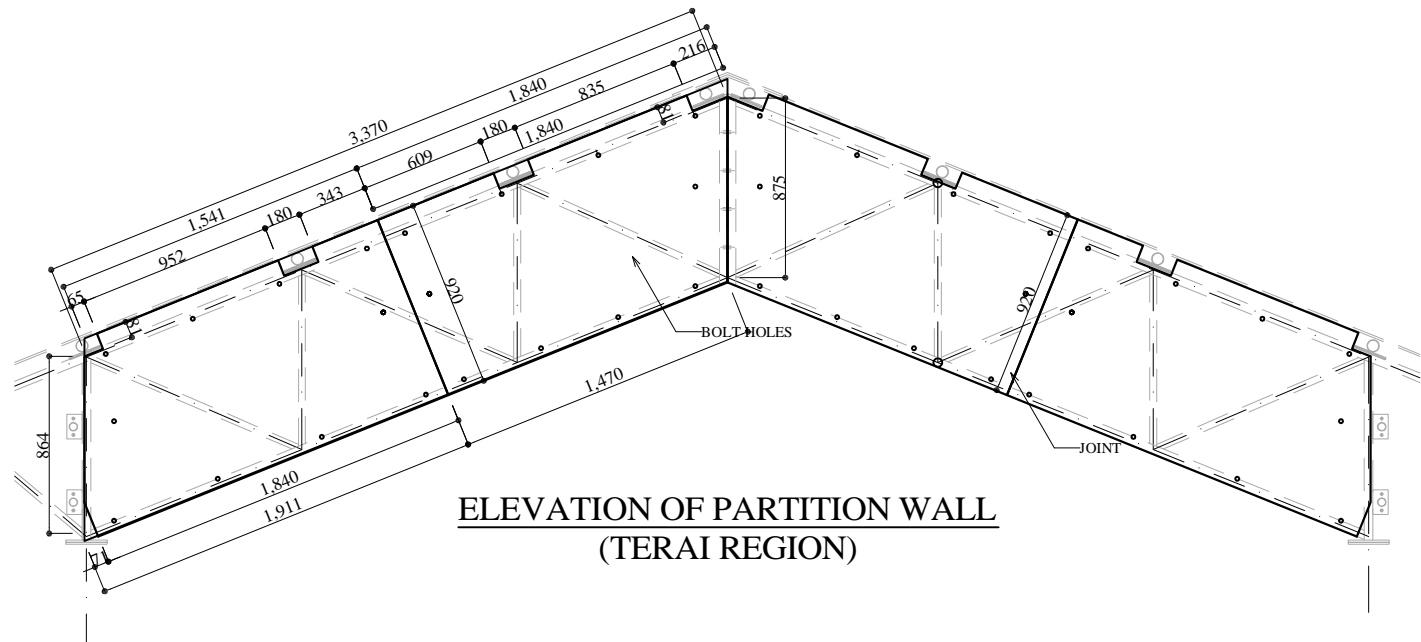
DOOR / WINDOW  
FRAMES & SHUTTERS

SCALE

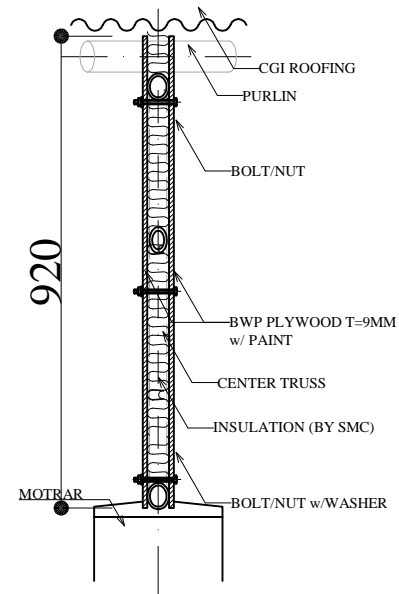


DWG. NO:

T H 02



**ELEVATION OF PARTITION WALL  
(TERAI REGION)**



NOTE:

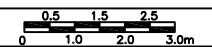
GOVERNMENT OF NEPAL  
MINISTRY OF EDUCATION  
DEPARTMENT OF EDUCATION

SCHOOL BUILDING  
TWO ROOM  
STEEL FRAME STRUCTURE

Sheet Title

PARTITION WALL

SCALE



DWG. NO:

TH06